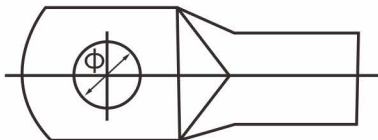
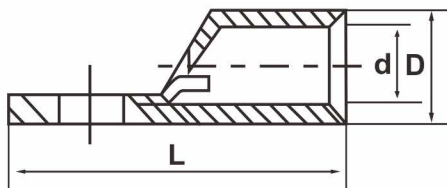


Electric Power Fittings

Copper Cable Terminals Non-Isolated - JGY Type

OUMO PUBLISH



Specifications	Dimensions(mm)				Code No.
	D	d	Φ	L	
JGY-1.5	3.5	2.1	Φ4.2, Φ5.2	18	OMU-JGY-001
JGY-2.5	4	2.6	Φ4.2, Φ5.2, Φ6.2	19	OMU-JGY-002
JGY-4	4.8	3.4	Φ5.2, Φ6.2	21	OMU-JGY-003
JGY-6	5.5	4.1	Φ5.2, Φ6.2, Φ8.2	24	OMU-JGY-004
JGY-10	6.5	5.1	Φ6.2, Φ8.2	28	OMU-JGY-005
JGY-16	8	6.4	Φ6.2, Φ8.2, Φ10.5	33	OMU-JGY-006
JGY-25	9	7	Φ6.2, Φ8.2, Φ10.5	36	OMU-JGY-007
JGY-35	10.5	8.5	Φ6.2, Φ8.2, Φ10.5, Φ12.5	42	OMU-JGY-008
JGY-50	12	9.8	Φ8.2, Φ10.5, Φ12.5	49	OMU-JGY-009
JGY-70	14.5	11.9	Φ8.2, Φ10.5, Φ12.5	55	OMU-JGY-010
JGY-95	16	13	Φ10.5, Φ12.5	60	OMU-JGY-011
JGY-120	19	15.4	Φ12.5, Φ16.5	67	OMU-JGY-012
JGY-150	20.5	16.7	Φ12.5, Φ16.5	73	OMU-JGY-013
JGY-185	23.5	19.3	Φ16.5	78	OMU-JGY-014
JGY-240	26	21.2	Φ16.5	92	OMU-JGY-015
JGY-300	30	24	Φ16.5, Φ20.5	102	OMU-JGY-016
JGY-400	34	27.6	Φ16.5, Φ20.5	113	OMU-JGY-017
JGY-500	38	31.6	Φ16.5, Φ20.5	123	OMU-JGY-018
JGY-630	45	37.6	Φ20.5	145	OMU-JGY-019

These products are suitable for the connection of copper conductors (section 1.5-1000mm²) in power cables with electronic equipment. They are made of higher 99.9 percent pure copper tube T2 and coated with tin. Their working temperature is -55°C to 150°C.