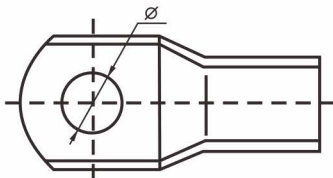
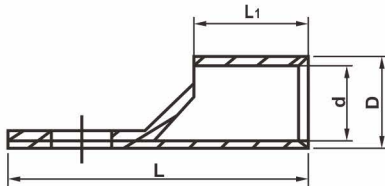


Electric Power Fittings

Copper Cable Terminals Non-Isolated - NCL Type

OUUMO PUBLISH



Specifications	Dimensions(mm)					Code No.
	D	d	Φ	L	L1	
NCL-25	9.5	7.2	Φ8.2	36	12	OMU-NCL-001
NCL-35	11	8.2	Φ8.2	42	14	OMU-NCL-002
NCL-50	12.5	9.5	Φ10.5	49	16	OMU-NCL-003
NCL-70	14.5	11.3	Φ10.5	55	20	OMU-NCL-004
NCL-95	17	13.4	Φ12.5	60	22	OMU-NCL-005
NCL-120	20.5	15.7	Φ12.5	67	23	OMU-NCL-006
NCL-150	22.5	17.1	Φ12.5	73	26	OMU-NCL-007
NCL-185	24	18.4	Φ16.5	78	32	OMU-NCL-008
NCL-240	28	21.4	Φ16.5	92	38	OMU-NCL-009
NCL-300	31	23.8	Φ16.5	102	42	OMU-NCL-010
NCL-400	34.5	27.6	Φ16.5	113	44	OMU-NCL-011
NCL-500	39	30.6	Φ16.5	123	48	OMU-NCL-012

These products are suitable for the connection of copper conductors (section 1.5-1000mm²) in power cables with electronic equipment. They are made of higher 99.9% pure copper tube T2 and coated with tin. Their working temperature is -55°C to 150°C.